

**| Outclassing Services for Earth, Atmosphere, and Navigation**

**OSEANAPRA**

**COMPANY PROFILE 2026**

 Indonesia Stock Exchange Tower II, 17th Floor  [www.oseanaprawirapersada.com](http://www.oseanaprawirapersada.com)  +6221-5291 7489  +62 818-0908-9738



# COMPANY OVERVIEW

*PT Oseana Prawira Persada is a marine survey services company delivering integrated offshore and nearshore survey solutions supported by dedicated vessels, experienced crews, and proven marine survey instrumentation. As part of the Seanav Group ecosystem, Oseana focuses on providing reliable, decision-ready data to support engineering, construction, and environmental projects.*

*Oseana combines technical capability with practical field execution, ensuring that survey data is collected, processed, and delivered in accordance with project objectives, safety requirements, and applicable standards. Our services are designed to reduce uncertainty, enhance operational safety, and support informed decision-making throughout the project lifecycle.*

**Efficient**

**Reliable**

**Transparent**

**Innovative**



## VISION

*TO BECOME A LEADING COMPANY in providing technology solutions through survey and navigation tools based on data, supporting the role as a trusted partner in understanding and protecting the environment, with solutions that encompass all dimensions—land, air, and sea.*

## MISSION

- 1. Striving to develop cutting-edge technology solutions that drive progress and efficiency, supporting global sustainability initiatives through responsible innovation.*
- 2. Committed to enhancing the quality and accuracy of data and analysis, fostering a culture of continuous improvement, collaboration, and breakthrough innovations.*
- 3. Dedicated to delivering exceptional services that exceed expectations, ensuring reliability, and building long-term partnerships based on trust and excellence.*



**Legal Entity:** PT Oseana Prawira Persada

**Business Identification Number (NIB):** 8120314151295

**Business Status:** Domestic Investment (PMDN)

# LEGALITY BUSINESS SCOPE

## Main KBLI Codes

- KBLI 74202 – Special Air Transportation Activities for Aerial Photography, Survey, and Mapping
- KBLI 71102 – Engineering Activities and Technical Consultancy
- KBLI 71202 – Laboratory Testing Services
- KBLI 71205 – Calibration / Metrology Services
- KBLI 33131 – Repair of Measuring, Testing, Navigation, and Control Instruments

*OSEANA operates under relevant KBLI classifications supporting hydrographic, marine, geophysical, environmental, and aerial survey services in Indonesia.*



# OUR BUSINESS SCOPE

*PT Oseana Prawira Persada operates in the field of **marine survey services** and **marine operational support**. The company provides offshore and nearshore survey solutions covering hydrographic, oceanographic, geophysical, geotechnical, coastal, aerial, and underwater survey activities. All services are delivered through integrated planning, reliable field execution, and standardized data processing workflows.*

**HYDROGRAPHIC SURVEY**

**MARINE GEOTECHNICAL SURVEY**

**MARINE GEOPHYSICAL SURVEY**

**MET-OCEAN SURVEY**

**TOPOGRAPHIC & COASTAL SURVEY**

**UXO SURVEY**

**UNDERWATER SURVEY SERVICES**

**AERIAL SURVEY**

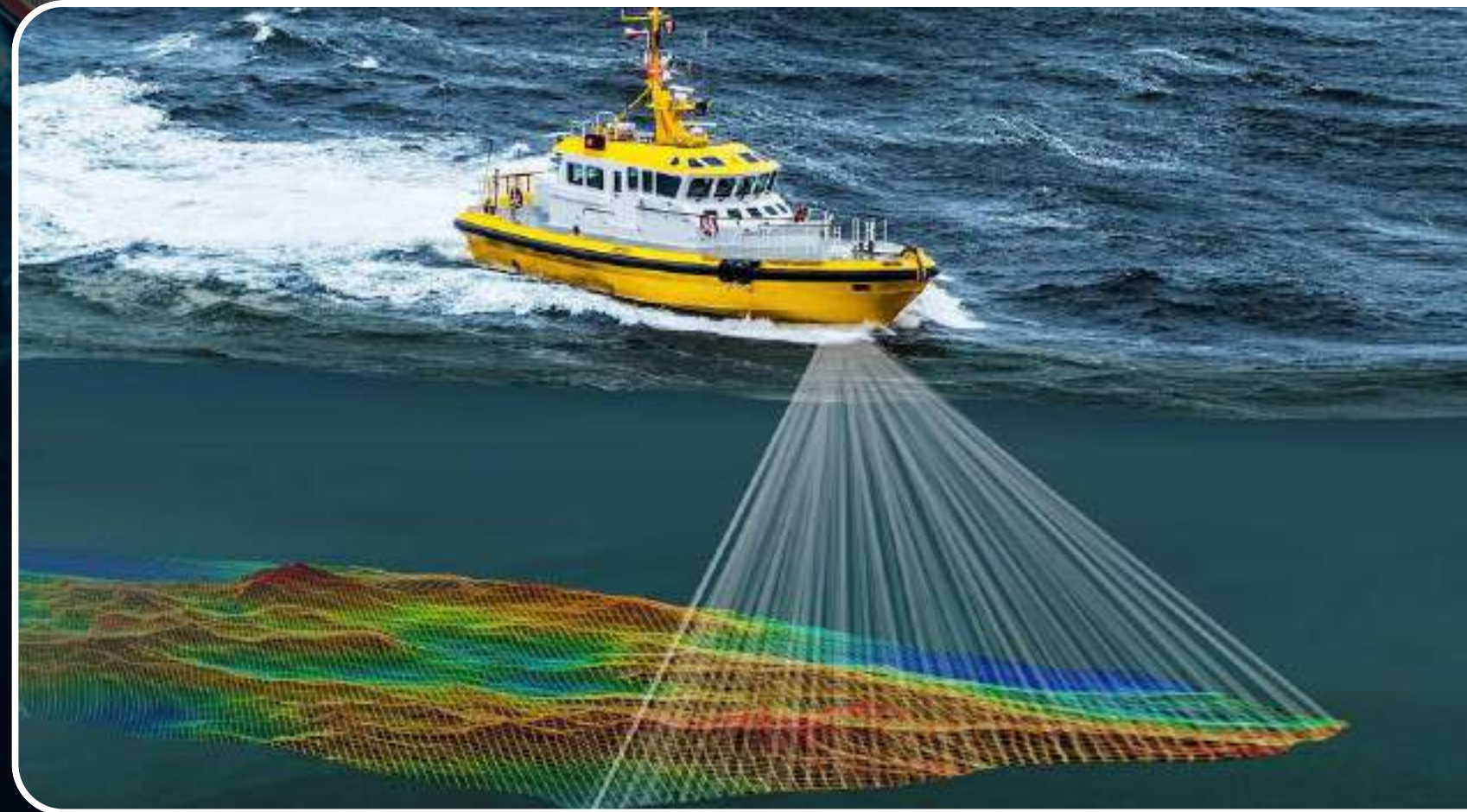
**LAND & ENVIRONMENTAL SURVEY SUPPORT**

# HYDROGRAPHIC SURVEY

*Hydrographic surveys provide accurate seabed and water depth measurements referenced to Mean Sea Level (MSL) to support navigation safety, port development, dredging activities, and offshore construction. Oseana conducts hydrographic surveys in offshore, nearshore, river, and lake environments using calibrated systems to support bathymetric mapping, volume calculation, and pre post construction assessments.*

## Main Equipment

- *Multibeam Echo Sounder (MBES)*
- *Single Beam Echo Sounder (SBES)*
- *GNSS RTK / DGPS*
- *Motion Reference Unit (MRU)*
- *Tide Gauge*
- *Survey Vessel / Small Craft*



# MET-OCEAN SURVEY

*Met-ocean surveys collect oceanographic and meteorological data to support offshore structure design, operational planning, risk assessment, and environmental analysis. Oseana measures currents, waves, tides, and water column characteristics to provide representative data for engineering design and offshore operations.*

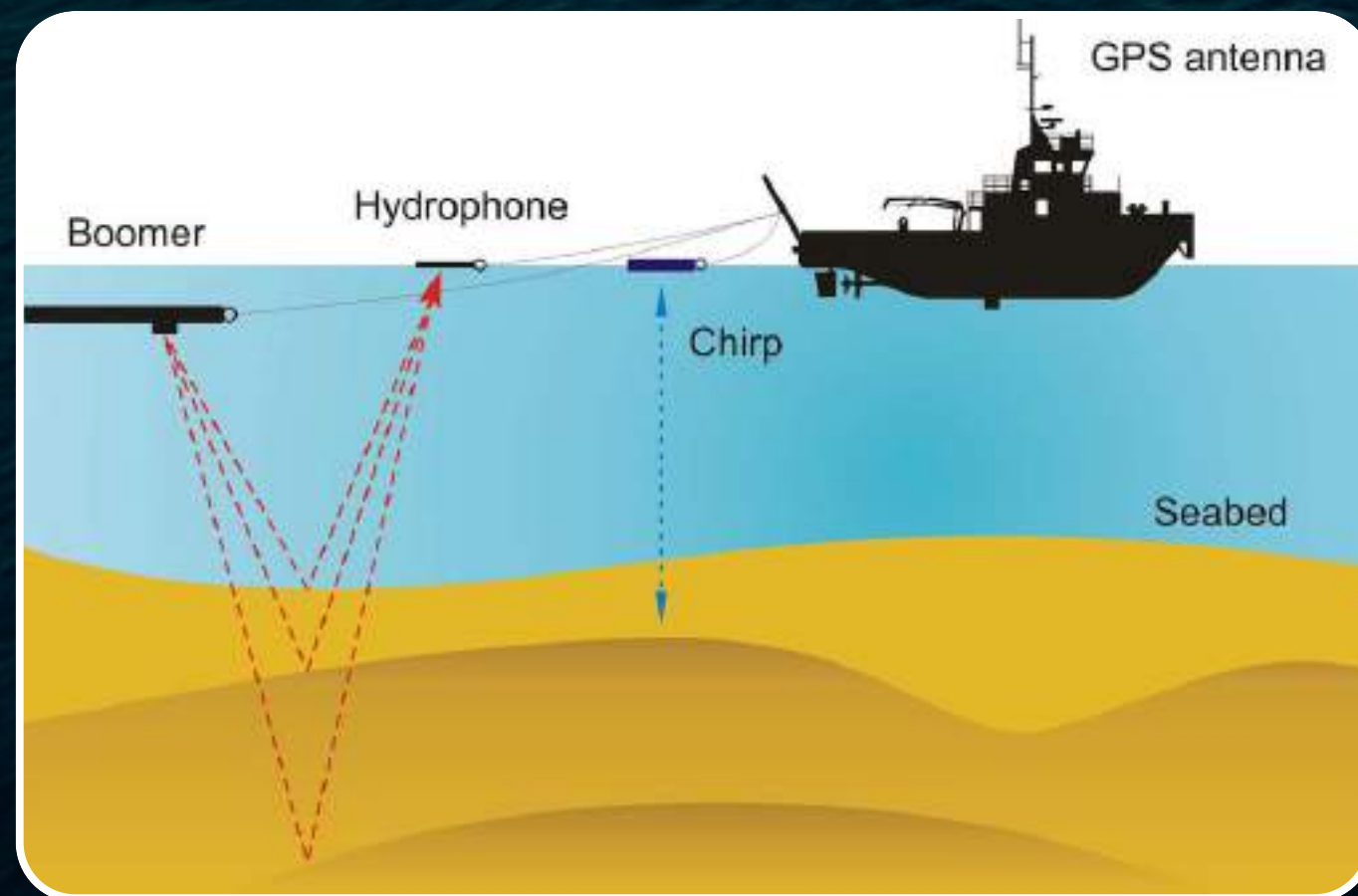
## Main Equipment

- *Acoustic Doppler Current Profiler (ADCP)*
- *CTD (Conductivity, Temperature, Depth)*
- *Wave Sensor / Wave Buoy*
- *Tide Gauge*
- *Automatic Weather Station (AWS)*



# MARINE GEOPHYSICAL SURVEY

*Marine geophysical surveys investigate seabed features and shallow to intermediate subsurface layers to support offshore development, cable and pipeline routing, and hazard identification. Oseana applies appropriate geophysical methods to identify seabed objects, sediment layers, and potential geohazards, producing accurate data to support engineering design and safe marine operations.*



## Main Equipment

- Side Scan Sonar (SSS)
- Sub-Bottom Profiler (SBP)
- Boomer / Sparker System (as required)
- Magnetometer
- GNSS Positioning System



# MARINE GEOTECHNICAL SURVEY

*Marine geotechnical surveys provide near-surface seabed and soil data to support foundation design and offshore engineering works. Oseana conducts geotechnical investigations to assess soil characteristics, bearing capacity, and construction feasibility for offshore structures, jetties, and subsea installations.*



## Main Equipment

- CPT / CPTu System
- Vibrocorer
- Grab Sampler
- Borehole Equipment (through partners)

# TOPOGRAPHIC & COASTAL SURVEY

*Topographic and coastal surveys integrate land and nearshore measurements to map shoreline morphology and coastal elevation in support of coastal engineering, reclamation, and shoreline management. Oseana provides accurate spatial data for planning and monitoring coastal developments, ensuring continuity between onshore and offshore design.*



## Main Equipment

- GNSS RTK
- Total Station
- UAV / Drone



# UNEXPLODED ORDNANCE SURVEY

*UXO surveys identify and map potential unexploded ordnance remnants from historical military activities to ensure safety prior to offshore construction, dredging, or seabed intervention works. This service is critical in minimizing safety risks during marine operations.*

*Oseana conducts UXO surveys using non-intrusive detection methods to support risk assessments and clearance planning. Survey outputs assist clients in making informed decisions regarding further investigation or mitigation actions.*

## Main Equipment

- Magnetometer
- Side Scan Sonar
- ROV / Diver Support (if required)
- Acoustic Positioning System (USBL)





# LAND & ENVIRONMENTAL SURVEY SUPPORT

*Land and environmental surveys provide accurate positioning control and baseline data to support engineering, marine infrastructure, and environmental permitting processes. Oseana delivers integrated terrestrial and marine survey data, including physical oceanographic measurements, seabed characterization, and environmental monitoring to support impact assessments and AMDAL requirements.*



## Main Equipment

- GNSS RTK
- Total Station
- Auto Level
- CTD
- Water Sampler
- Sediment Grab Sampler
- GPS & Field Instruments

# UNDERWATER SURVEY SERVICES

*Underwater survey services provide visual and condition assessments of submerged structures, pipelines, cables, and seabed features to support asset integrity and operational safety. Oseana utilizes diver-based and remotely operated systems to conduct inspections in accordance with project and safety requirements.*

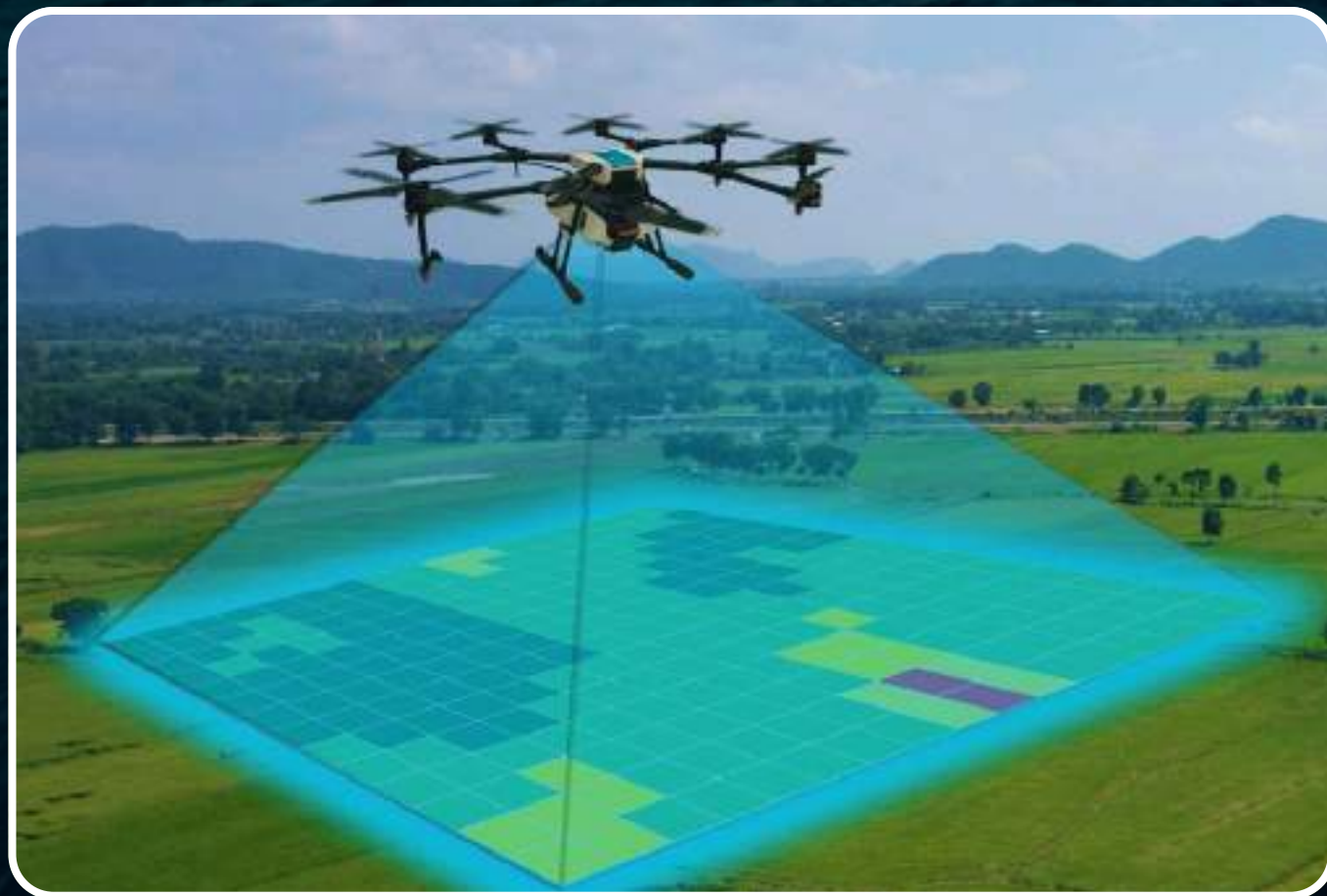
## Main Equipment

- ROV
- Underwater Camera
- Diver-based Inspection Tools
- Imaging Sonar (if required)



# AERIAL SURVEY SERVICES

*Aerial survey services deliver rapid, high-resolution spatial data acquisition for mapping, monitoring, and inspection across marine, coastal, and terrestrial environments. Oseana deploys UAV/drone-based platforms operated by certified pilots to support efficient data collection with high positional accuracy, enhanced safety, and reduced operational costs.*



## Main Equipment

- UAV / Drone Platforms
- High-Resolution RGB Camera
- RTK / PPK GNSS System
- Multispectral Camera (if required)
- LiDAR Payload (if required)

# SURVEY EQUIPMENT & OPERATIONAL CAPABILITIES



Multibeam  
Echosounder



ADCP



Sub Bottom  
Profiler



Remotely  
Operated Vehicle



Global Navigation  
Satellite System

*Survey operations are supported by appropriate and proven instrumentation, deployed based on project requirements*



# VESSEL & MARINE OPERATIONS

*PT Oseana Prawira Persada delivers marine survey operations supported by suitable survey vessels and small crafts for offshore and nearshore environments. The company operates and offers the Alika survey vessel as a charterable platform to support various marine survey activities. Operations are carried out by experienced crews and surveyors following established procedures to ensure safety, efficiency, and data quality, with flexible deployment aligned to project scope and site conditions.*

*Charter Overview (Alika Survey Vessel):*

- *Crew rest area and onboard toilet*
- *Capacity tailored to survey requirements*
- *Available for short- and project-based charter*



**KM ALIKA**



# SELECTED PROJECT EXPERIENCE

PT Oseana Prawira Persada has delivered marine survey services supporting operational, engineering, and post-construction requirements for industrial and infrastructure projects. Our project experience reflects practical field execution, reliable data acquisition, and adherence to survey standards.

## PT BERAU COAL

### MULTIBEAM BATHYMETRY SURVEY

**Scope of Work: Multibeam Bathymetry Survey and Tide Observation**

This survey supported operational and planning requirements through accurate seabed mapping and depth measurement, providing reliable bathymetric data for marine activities in an industrial riverine environment.

**Lungsuranaga, Berau (2025)**

## PT SOGA TEKNIK UTAMA

### MBES BATHYMETRY SURVEY (POST-DREDGING)

**Scope of Work: Multibeam Bathymetry Survey (Post-Dredging)**

The post-dredging survey was conducted to verify dredging outcomes and seabed conditions within a port basin area, supporting project verification and compliance with design requirements.

**Batam (2025)**



# WHY CHOOSE US?

**Survey Excellence,  
Executed in the Field**

**From Field to Data  
You Can Trust**





# PROJECT EXPERIENCE & CAPABILITIES

*"Every system we build is a reflection of precision, reliability, and collaboration."*



# GET IN TOUCH WITH US

We believe technology is not just a tool, but a bridge connecting data, people, and environmental sustainability. Oseana serves as a strategic partner for government institutions, state-owned enterprises, and research agencies to realize data-driven and innovative development.

The logo for Oseana, featuring a stylized globe icon to the left of the word "OSEANA" in a bold, blue, sans-serif font. The letter "E" is uniquely designed with a blue and brown wave-like shape passing through it.

**OSEANA**



**+6221-52917489**



**+62 818-0908-9738**



**[oseanaprawirapersada.com](http://oseanaprawirapersada.com)**



**[sales@oseanaprawirapersada.com](mailto:sales@oseanaprawirapersada.com)**



**Indonesia Stock Exchange Tower II, 17th Floor  
Jl. Jend. Sudirman Kav. 52-53, Senayan,  
Jakarta Selatan**

**THANK YOU**

**OSEANAPRA**

**OUTCLASSING SERVICES FOR EARTH, ATMOSPHERE, AND NAVIGATION**

---

[WWW.OSEANAPRAWIRAPERSADA.COM](http://WWW.OSEANAPRAWIRAPERSADA.COM)